

CROUZET AUTOMATION

CROUZET TOUCH PASS THROUGH FUNCTION - ETHERNET



Selecting Pass-Through Function

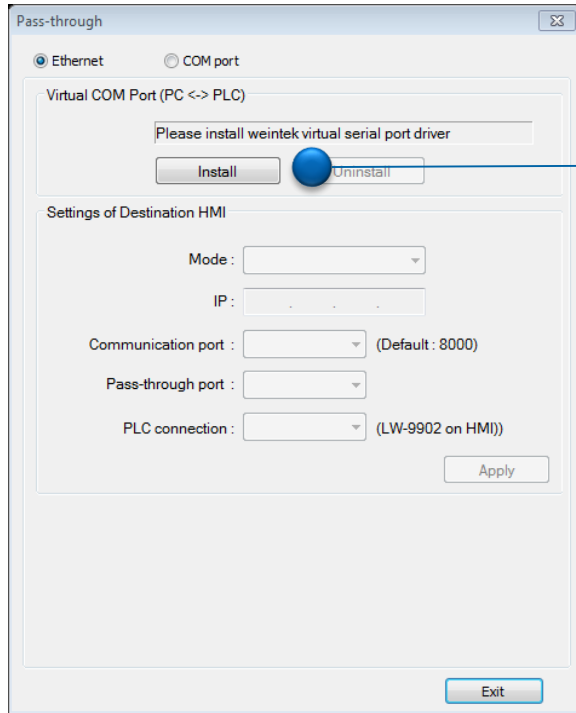


Open Crouzet Touch Soft

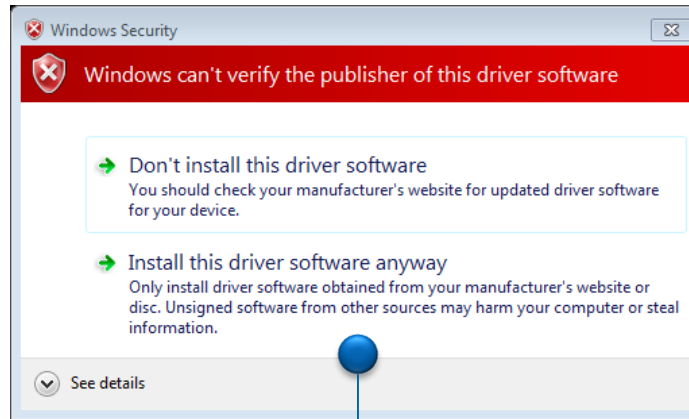
Select
Analysis & Testing

Select Pass-Trough



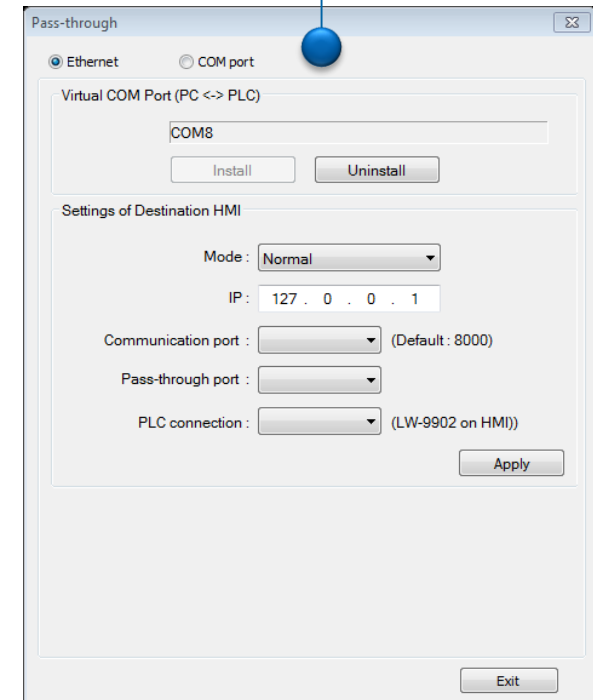


Select Install

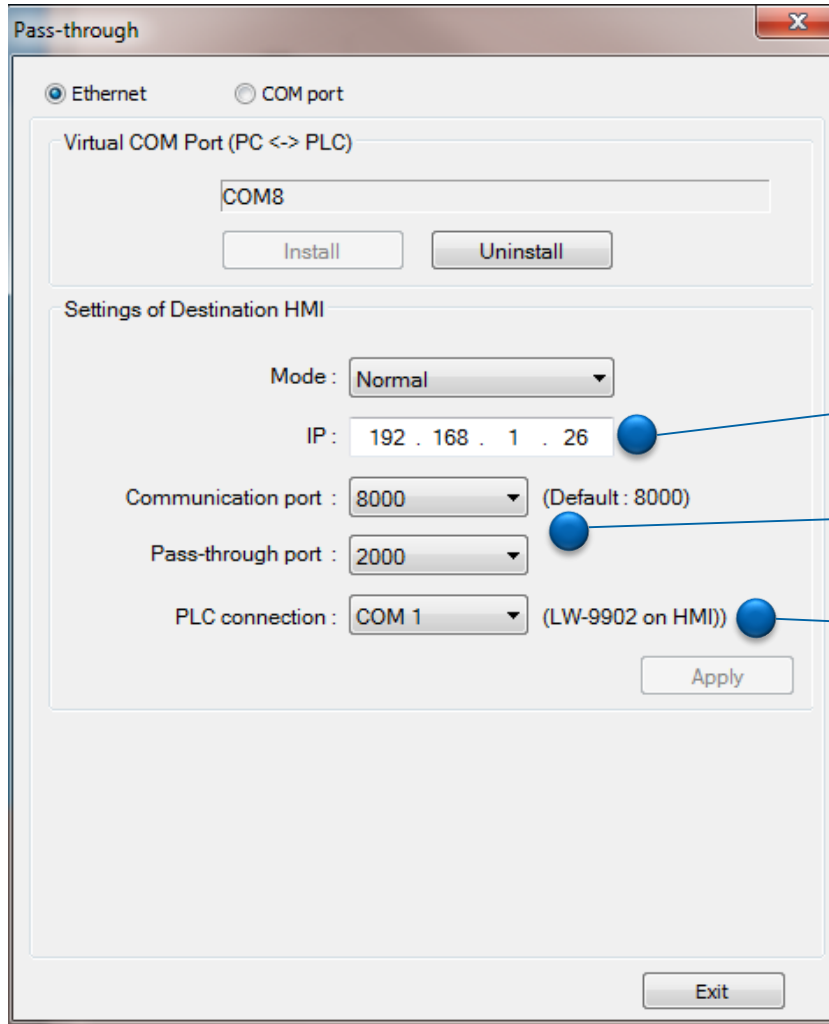


Select Install this driver software anyway

On installation you will see this



Setting up Pass-Through Driver Software

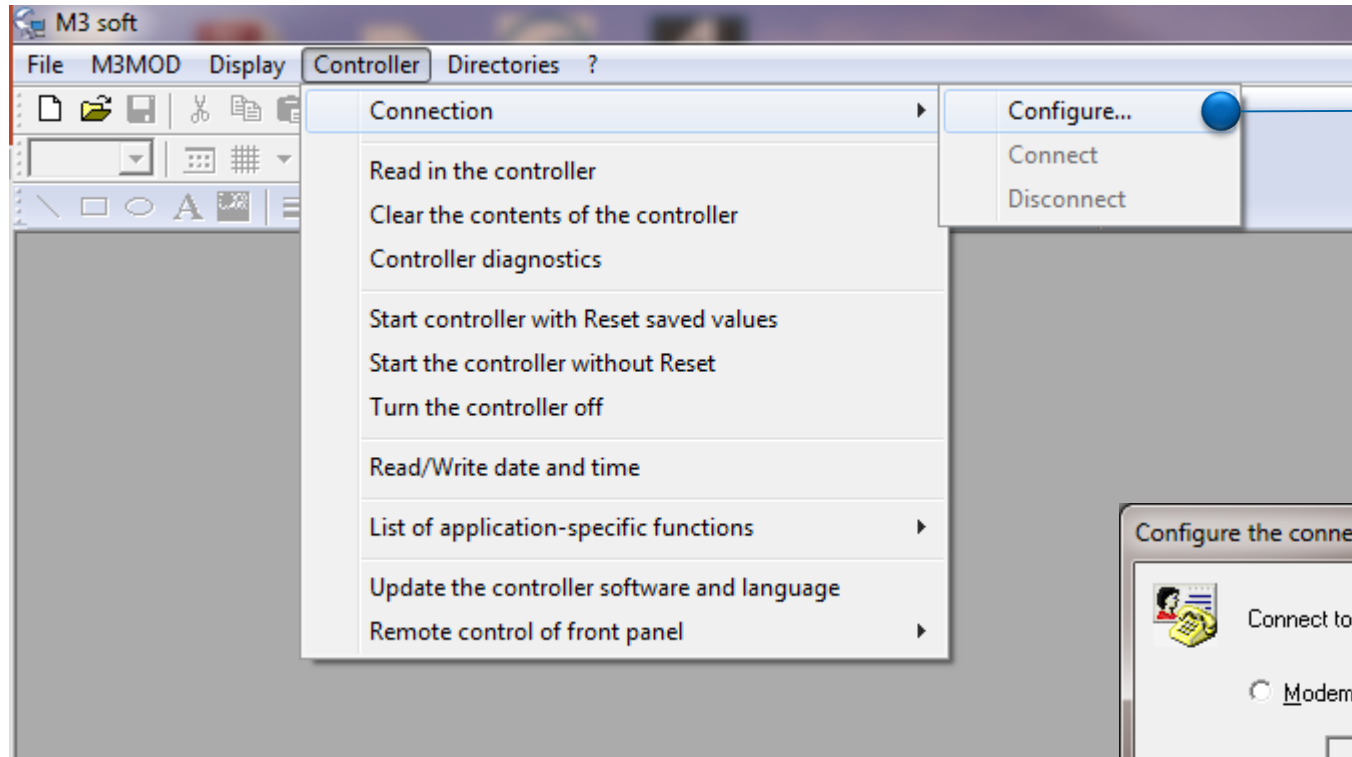


Enter IP address of the
Crouzet Touch CTP screen

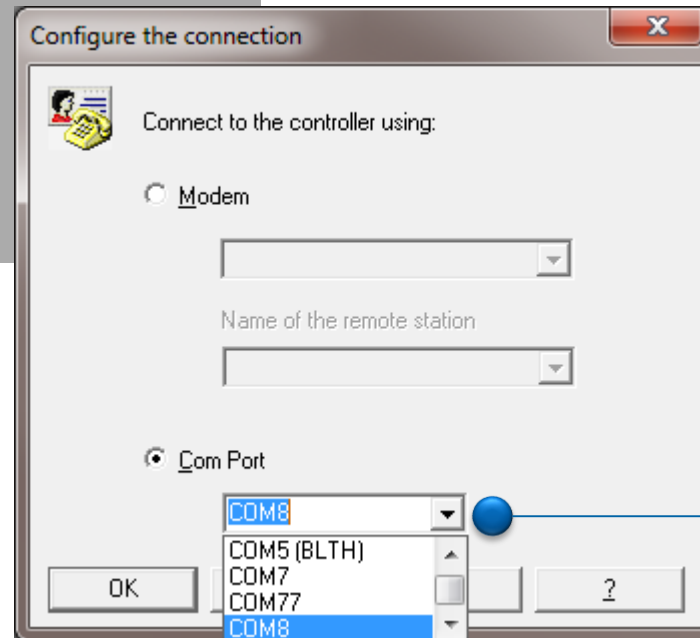
Fill in these default Port addresses

COM Port of PLC connection to
the Crouzet Touch CTP screen

Setting up M3 soft to function with Pass-Through



In M3 soft, select
Controller > Connection > Configure



Select the COM port from
Pass-Through

**THANK YOU
FOR YOUR ATTENTION**

WWW.CROUZET-AUTOMATION.COM